

INDEX.

STREETS.	INDEX	INDEX	INDEX	INDEX
Adams, N.	101-120	101-120	101-120	101-120
Beal, N.	201-220	201-220	201-220	201-220
Cedar, N.	301-320	301-320	301-320	301-320
Charles, W.	401-420	401-420	401-420	401-420
Cherry, N.	501-520	501-520	501-520	501-520
Clark, N.	601-620	601-620	601-620	601-620
Clatsop, N.	701-720	701-720	701-720	701-720
College Court	801-820	801-820	801-820	801-820
Division, E.	901-920	901-920	901-920	901-920
Eddy, N.	1001-1020	1001-1020	1001-1020	1001-1020
Elgin, E.	1101-1120	1101-1120	1101-1120	1101-1120
Em, N.	1201-1220	1201-1220	1201-1220	1201-1220
Evans, N.	1301-1320	1301-1320	1301-1320	1301-1320
Fifth, E.	1401-1420	1401-1420	1401-1420	1401-1420
Washington Ave., S.	1500-1520	1500-1520	1500-1520	1500-1520
Wheeler Ave., N.	1600-1620	1600-1620	1600-1620	1600-1620

INSURANCE MAPS FEB 26 1910

Grand Island

HALL COUNTY
NEBRASKA

Sanborn Map Company

SCALE 50 FT. TO AN INCH
11 BROADWAY NEW YORK

DEC. 1909

Copyright 1910, by the Sanborn Map Co.

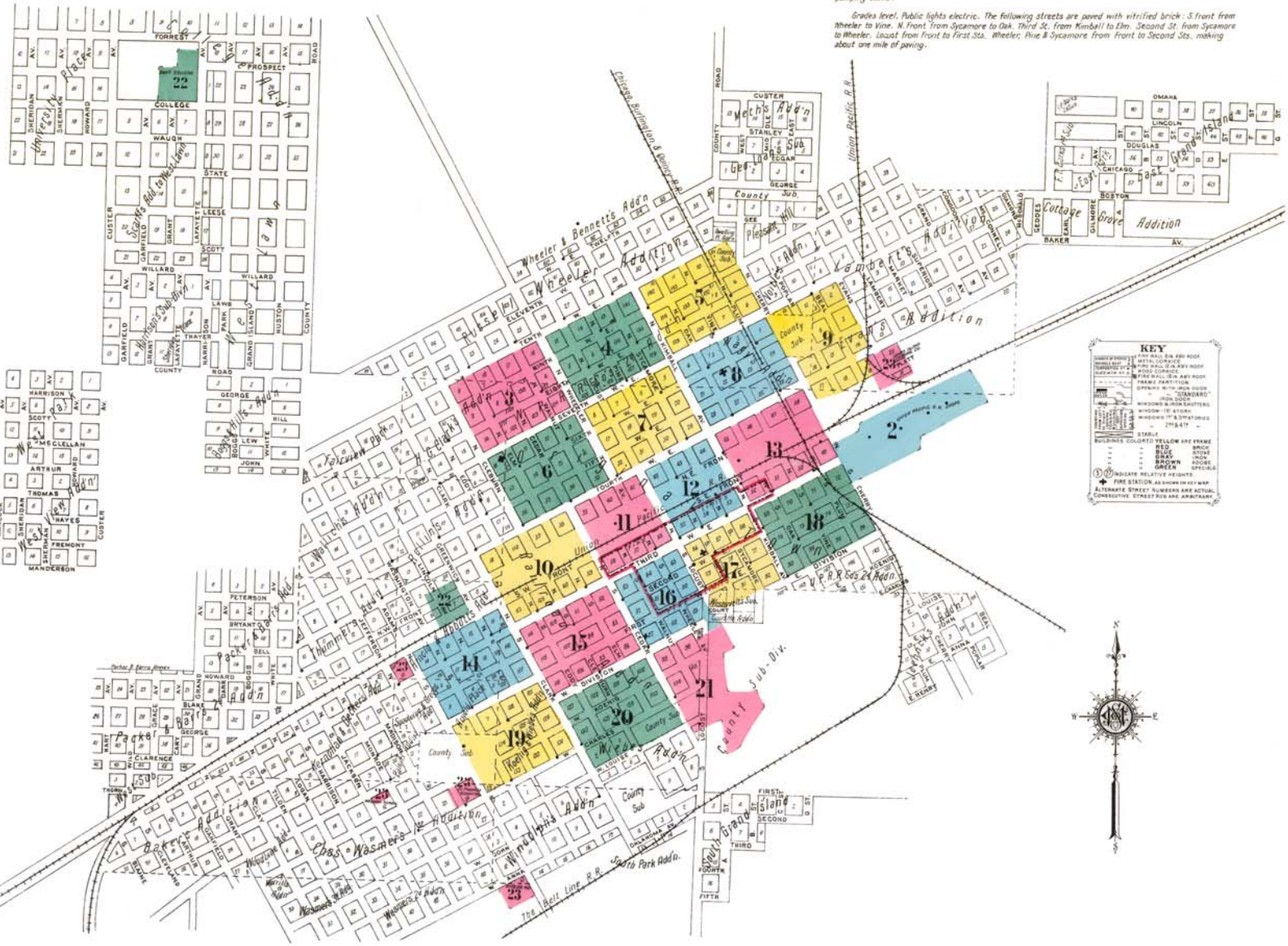
Population 14,000 Prevailing Winds N.W.
WATER FACILITIES

Municipal ownership, water from four driven wells - 10" x 100 ft. and 12 driven wells - 8" x 70 ft. by one Leiding Darn Garden Pump, capacity 3000 gals. per min. and by one Kincaid pump, capacity 500 gals. per minute to stand pipe, 12" x 12" - capacity 30,000 gals. 20 miles 10" to 6" cast iron mains laid 1886 and extended 1888 & 1893. 105 double hydrants. Domestic pressure, 40 lbs. Fire pressure up to 65 lbs. Average daily consumption in summer 1,500,000 gals. - in winter 1,000,000 gals.

FIRE DEPARTMENT

Partly paid, four paid men and 25 volunteers. Five companies, two horses. One hose wagon with 200' 2 1/2" C.R.L. hose and 40 gals. chemical tank with 50' 4" chemical hose, four hand hose carts. One Village H. & L. Truck, 800 ft. 2 1/2" rubber hose, 600 ft. C.R.L. hose on hand hose carts. Fire alarm: electric 60 stations. Whistle on pumping station.

Grades level. Public lights electric. The following streets are paved with vitrified brick: S. front from Wheeler to Vine. N. front from Sycamore to Oak. Third St. from Kimball to Elm. Second St. from Sycamore to Wheeler. Lowest from Front to First Sts. Wheeler, Pine & Sycamore from Front to Second Sts. making about one mile of paving.



KEY

- STABLE
- BUSINESS COURTYARD YELLOW OR FRAME
- RED BRIDGE
- BLACK BRIDGE
- GREEN BRIDGE
- INDICATE RELATIVE HEIGHTS
- FIRE STATION AS SHOWN ON KEY MAP
- STANDARD STREET NUMBERS ARE ACTUAL
- CONSECUTIVE STREET NUMBERS ARE ARBITRARY

