

SANBORN MAP & PUBLISHING CO. LIMITED
 Population 6500
 Steam & Hand Engines
 3 Independent Horse Carriage
 Water Facilities
 Sewerage
 Electric Light & Power
 Telephone
 Preparing Work N.Y.
GRANDISLAND
 JAN. 1885
 No. 1

WE THE UNDERSIGNED FIRE INS. AGENTS HAVE CAREFULLY EXAMINED THE FIRE MAP OF GRANDISLAND N.B. MADE BY THE SANBORN MAP & PUB. CO. LIMITED OF NEW YORK AND FOUND THE SAME CORRECT & COMPLETE

Wm. J. Schell
Asst. Secy and Agt
Woolley Street
White and Robinson

SEE DETACHED.

Map Division
 July 25 1885
 Library of Congress

NOTICE.—The SANBORN MAP & PUBLISHING CO. (Limited) will Loan, to parties purchasing one copy of this map a Duplicate, with the mutual understanding and agreement that it is to be used exclusively by their General or Local Agent, and with the further agreement that if not so used, one of the two copies will be returned to said Company.

THE NORTH PLATTE LUMBER CO.



JAN. 1885
GRAND ISLAND
NEB.



NOTICE.—The SANBORN MAP & PUBLISHING CO. (Limited) will loan, to parties purchasing one copy of this map, a Duplicate, with the mutual understanding and agreement that it is to be used exclusively by their General or Local Agent, and with the further agreement that, if not so used, one of the two copies will be returned to said Company.

JAN. 1885
GRAND ISLAND
 NEB.

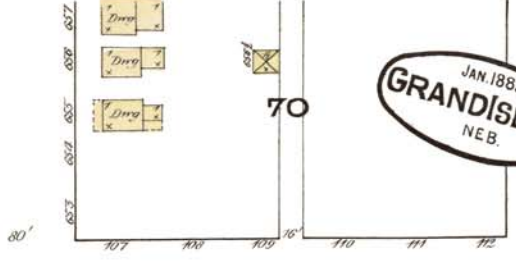
3

DEPOT HOTEL

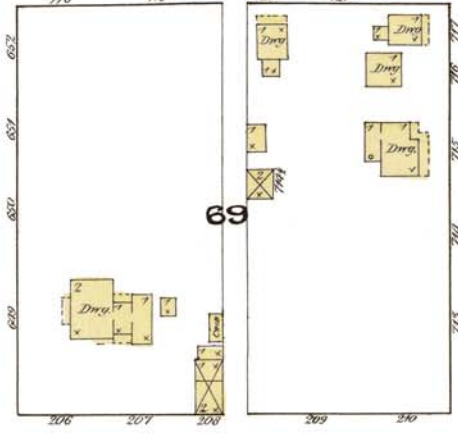
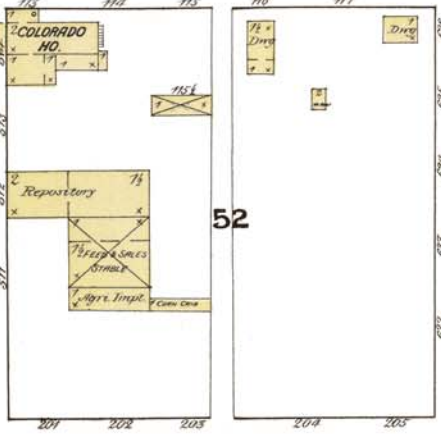
DEPOT

U.P.R.R. OIL HOUSE

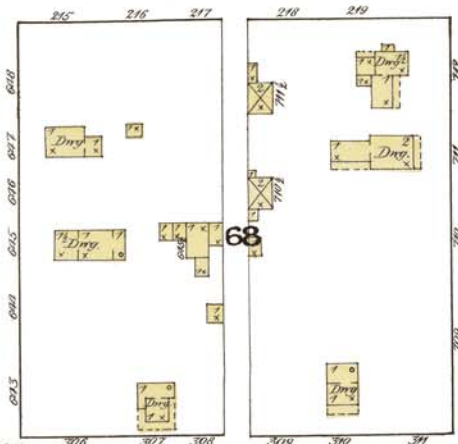
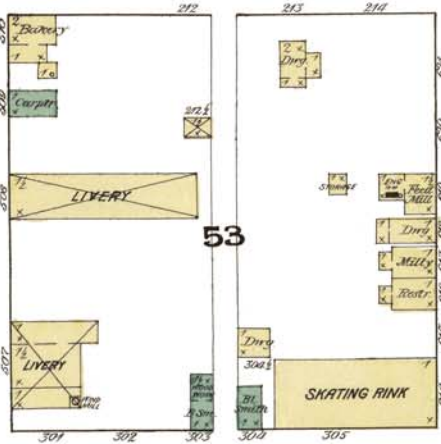
U.P.R.R. OIL HOUSE



OAK



MULBERRY



SYCAMORE



PINE

ST. 3RD

ST. 2ND



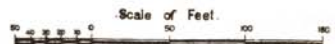
U.P.R.R.

U.P.R.R. FREIGHT DEPOT

SEE

SHEET

NO. 2



Map Division
 Library of Congress