

NOTICE.—The SANBORN MAP & PUBLISHING CO. (Limited) will loan, to parties purchasing one copy of this map, a Duplicate, with the mutual understanding and agreement that it is to be used exclusively by their General or Local Agent, and with the further agreement that, if not so used, one of the two copies will be returned to said Company.

JAN. 1885
GRAND ISLAND
 NEB.

3

DEPOT HOTEL

DEPOT

U.P.R.R. OIL HOUSE

U.P.R.R. OIL HOUSE

U.P.R.R. OIL HOUSE

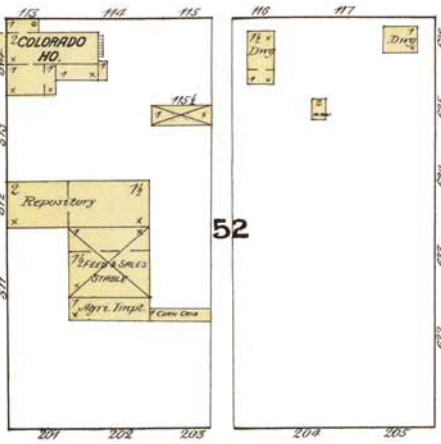
U.P.R.R.

U.P.R.R. FREIGHT DEPOT

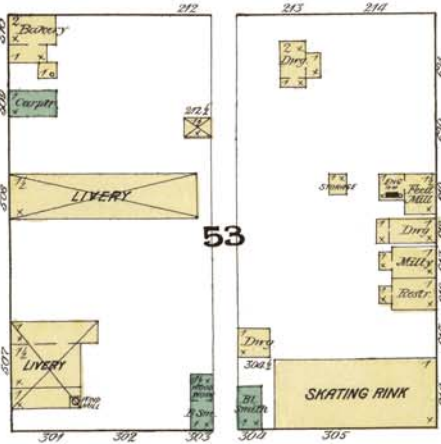
SEE



OAK



MULBERRY

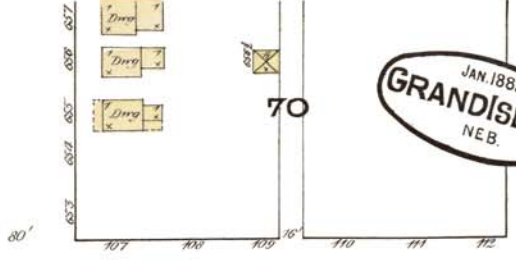


SYCAMORE

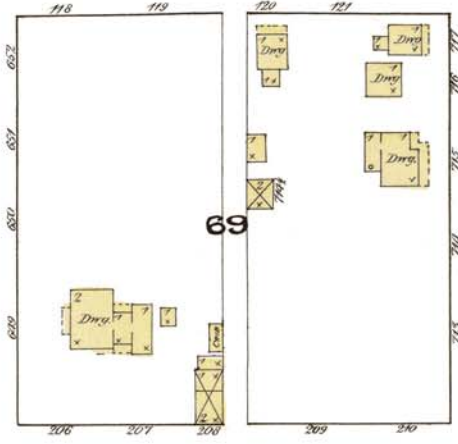


PINE

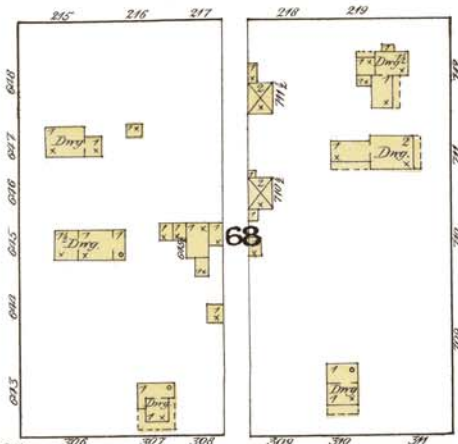
SHEET



70



69



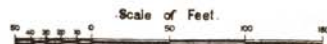
68



67

3RD ST.

2ND ST.



NO. 2

Map Division
 Library of Congress

DETACHED DWELLINGS