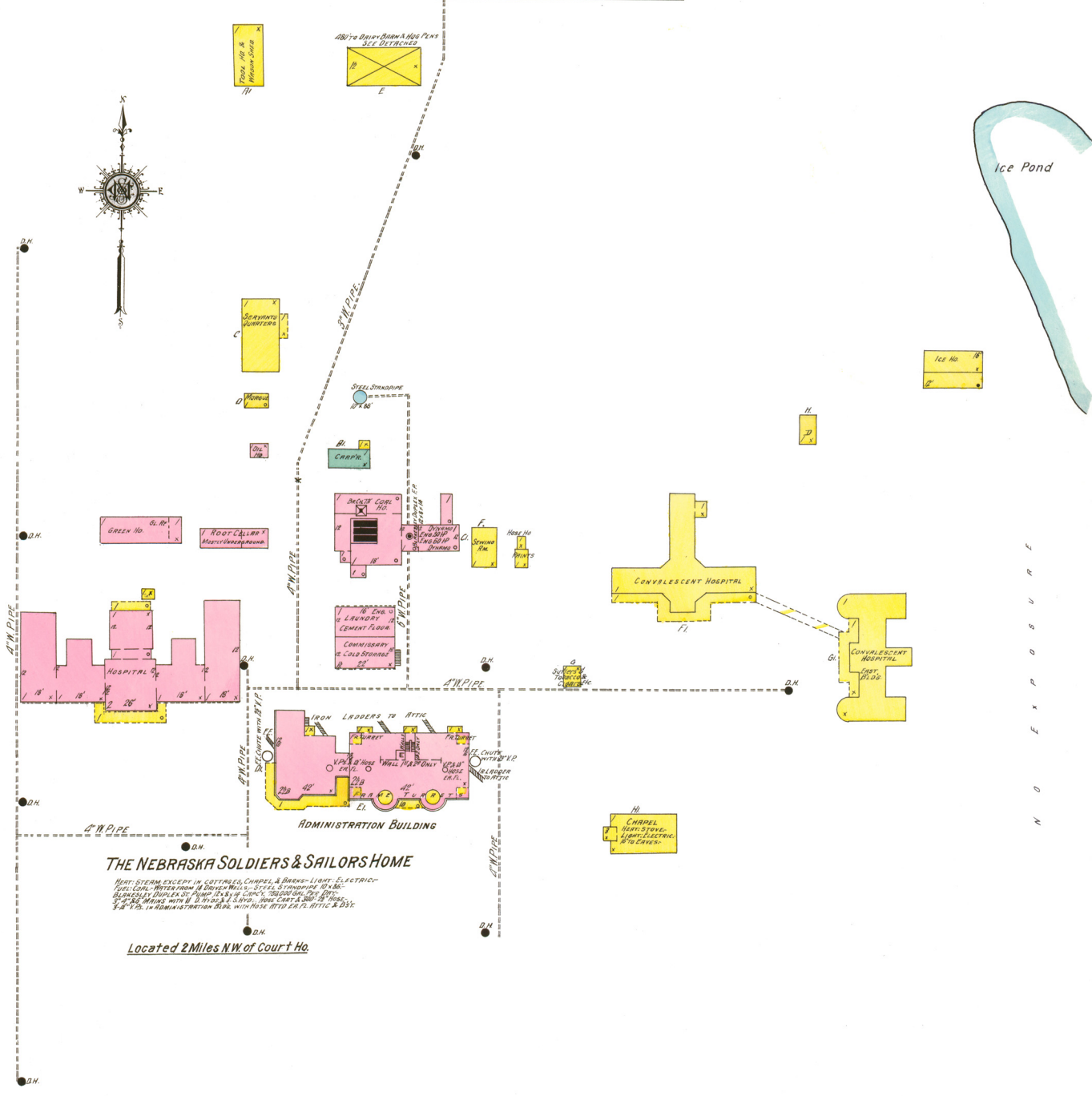
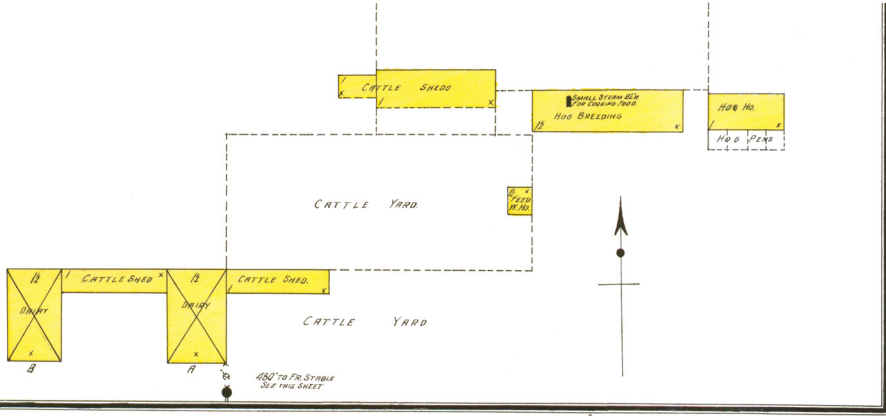


CHICAGO BURLINGTON & QUINCY R. R.



THE NEBRASKA SOLDIERS & SAILORS HOME

HEAT STEAM EXCEPT IN COTTAGES, CHAPEL, & BARN - LIGHT ELECTRIC -
SINKS, CUPB. WATER FROM 4" DIAMETER WELLS - STEEL STONEDOME W/ WELLS -
BLINDS & DOUBLE ST. PUMP IS 3 1/2" COPPER TUBING GALV. PIPE -
3" 2" 1" WELLS WITH 6" D. 10' & 8' 3" ST. PIPE - HOSE COUPLER & HOSE 1" DIA. -
3" 2" 1" IN ADMINISTRATION BLDG. WITH HOSE ATT'D TO FL. ATTIC & 2ND.

Located 2 Miles NW of Court Ho.

