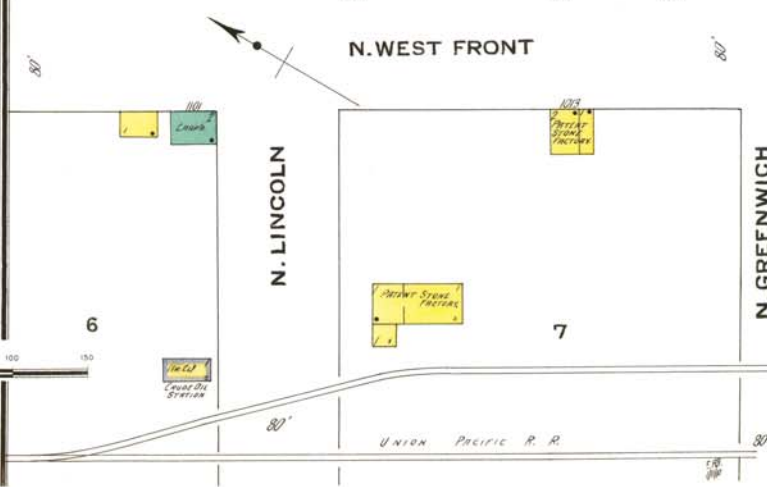
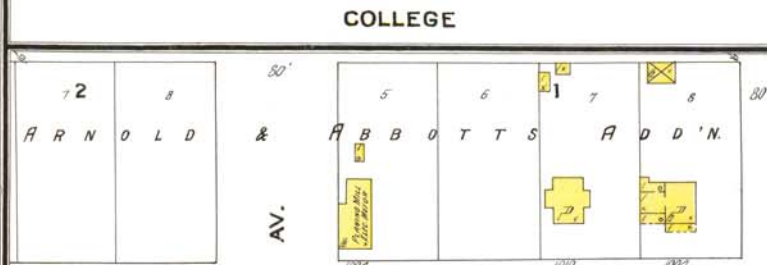
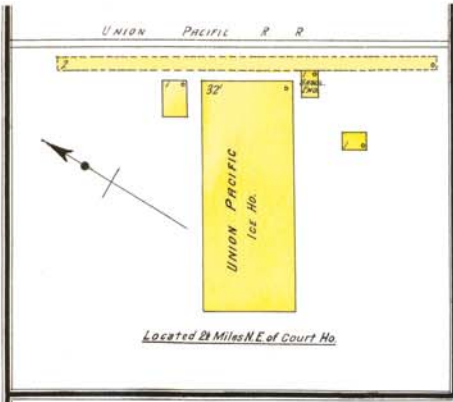


DEC. 1909  
**GRANDISLAND**  
NEB.



**AMERICAN BEET SUGAR CO.**

CAPACITY 350 TONS OF BEETS PER DAY  
SCREENS SET ON JOBS AT BEET NORTH SIDE  
WATERWORKS - SANITARY CLONE  
12' DIAMETER - HEAVY STEEL - DAY &  
NIGHT LIGHTS ON BEET HO. BEET  
HOUSE - BEET FROM BEET HO. TO  
BY 1' DIAMETER & 2' DIAMETER PUMP  
CAPACITY 150000 GALLONS PER HOUR  
12' DIAMETER PUMP  
5' INSIDE DIAMETER VESSEL WITH 20" HOLE  
WATER WHEEL 1' DIAMETER  
MATCH PUMP SYSTEM - STORAGE OF PULP  
LIGHTS - 400' FEET LONG CHEM. SYSTEM  
DRAINAGE

Located 2 1/2 Miles S.W. of Court Ho.

